



SAW multimedia filters

Series/Type: K9354D

The following products presented in this data sheet are being withdrawn.

Ordering Code	Substitute Product	Date of Withdrawal	Deadline Last Orders	Last Shipments
B39389K9354N201		2011-01-14	2011-09-30	2012-09-30

For further information please contact your nearest EPCOS sales office, which will also support you in selecting a suitable substitute. The addresses of our worldwide sales network are presented at www.epcos.com/sales.

© EPCOS AG 2015. Reproduction, publication and dissemination of this publication, enclosures hereto and the information contained therein without EPCOS' prior express consent is prohibited.

EPCOS AG is a TDK Group Company.

SAW Components

K 9354 D

IF Filter for Audio Applications

38,90 MHz

Data Sheet

Standard

- B/G
- D/K
- I
- L

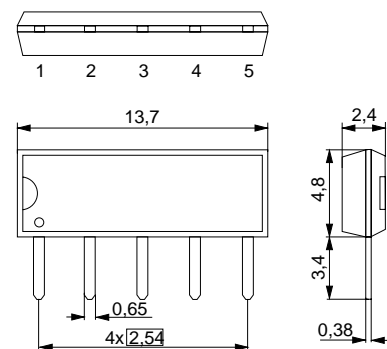
Duroplast package **SIP5D**

Features

- TV IF audio filter with pass band for sound carriers at 32,40 MHz (D/K, L), 32,90 MHz (I) and 33,40 MHz (B/G)
- Standard IC package

Terminals

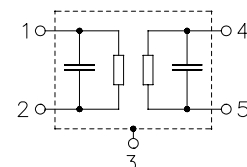
- Tinned CuFe alloy



Dimensions in mm, approx. weight 0,5 g

Pin configuration

- 1 Input
- 2 Input - ground
- 3 Chip carrier - ground
- 4 Output
- 5 Output



Type	Ordering code	Marking and package according to	Packing according to
K 9354 D	B39389-K9354-N201	C61157-A1-A21	F61074-V8049-Z000

Maximum ratings

Operable temperature range	T_A	-25/+80	°C	
Storage temperature range	T_{stg}	-40/+85	°C	
DC voltage	V_{DC}	5	V	between any terminals
AC voltage	V_{pp}	10	V	between any terminals

SAW Components
K 9354 D
IF Filter for Audio Applications
38,90 MHz
Data Sheet
Characteristics

Reference temperature:

$$T_A = 25\text{ }^{\circ}\text{C}$$

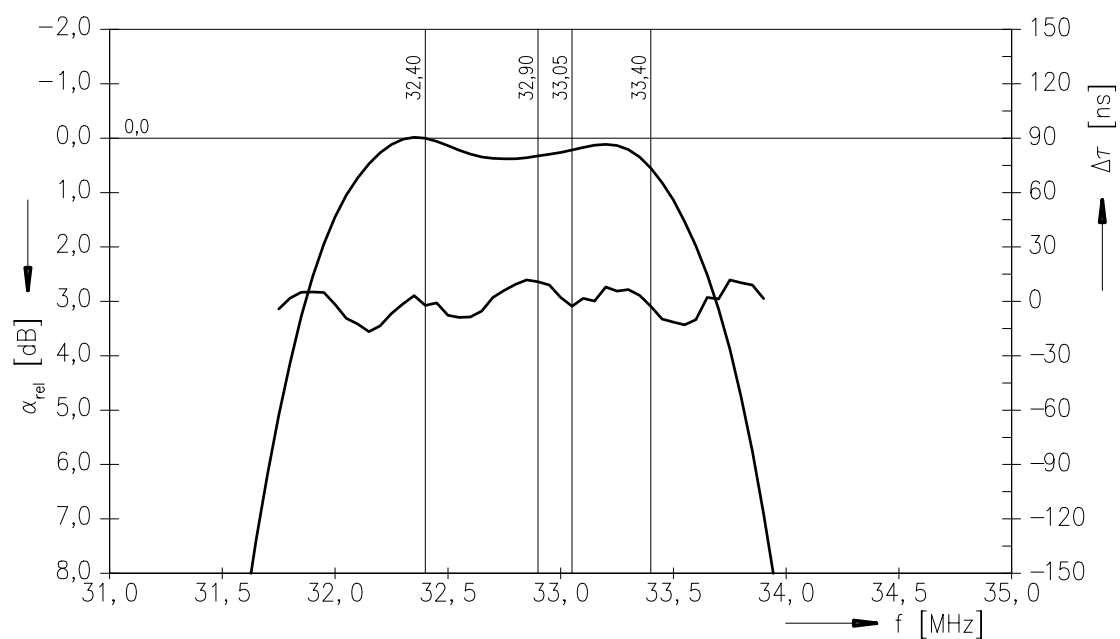
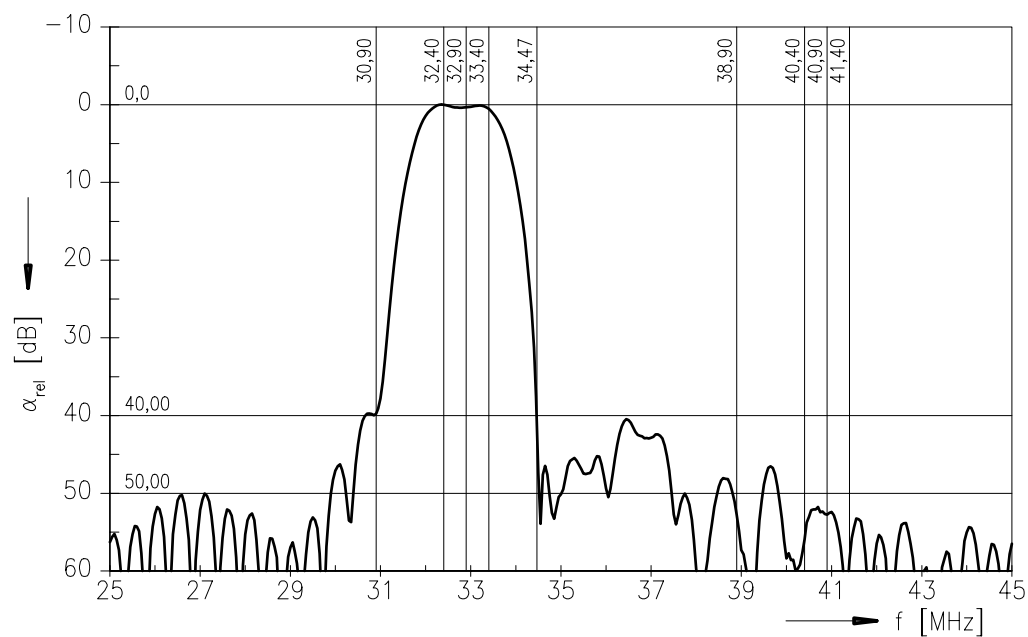
Terminating source impedance:

$$Z_S = 50\text{ }\Omega$$

Terminating load impedance:

$$Z_L = 2\text{ k}\Omega \parallel 3\text{ pF}$$

		min.	typ.	max.	
Insertion attenuation α					
Reference level for the following data	32,40 MHz	10,8	12,3	13,8	dB
Relative attenuation α_{rel}					
Sound carrier	33,40 MHz	-0,4	0,6	1,6	dB
	32,90 MHz	-0,7	0,3	1,3	dB
	33,05 MHz	-0,9	0,1	1,1	dB
Picture carrier	38,90 MHz	42,0	52,0	—	dB
Color carrier	34,47 MHz	26,0	36,0	—	dB
Adjacent picture carrier	30,90 MHz	32,0	38,0	—	dB
Adjacent sound carrier	40,40 MHz	42,0	57,0	—	dB
	40,90 MHz	42,0	55,0	—	dB
	41,40 MHz	42,0	55,0	—	dB
Lower sidelobe	25,00 ... 30,90 MHz	31,0	37,0	—	dB
Upper sidelobe	38,90 ... 45,00 MHz	39,0	46,0	—	dB
Impedance at 32,40 MHz					
Input: $Z_{\text{IN}} = R_{\text{IN}} \parallel C_{\text{IN}}$		—	0,9 \parallel 14,2	—	k Ω \parallel pF
Output: $Z_{\text{OUT}} = R_{\text{OUT}} \parallel C_{\text{OUT}}$		—	3,3 \parallel 2,9	—	k Ω \parallel pF
Temperature coefficient of frequency	TC_f	—	-72	—	ppm/K

Data Sheet
Frequency response


SAW Components**K 9354 D****IF Filter for Audio Applications****38,90 MHz****Data Sheet****Published by EPCOS AG****Surface Acoustic Wave Components Division, SAW CE MM PD****P.O. Box 80 17 09, D-81617 München**

© EPCOS AG 2003. All Rights Reserved. Reproduction, publication and dissemination of this brochure and the information contained therein without EPCOS' prior express consent is prohibited.

The information contained in this brochure describes the type of component and shall not be considered as guaranteed characteristics. Purchase orders are subject to the General Conditions for the Supply of Products and Services of the Electrical and Electronics Industry recommended by the ZVEI (German Electrical and Electronic Manufacturers' Association), unless otherwise agreed.

This brochure replaces the previous edition.

For questions on technology, prices and delivery please contact the Sales Offices of EPCOS AG or the international Representatives.

Due to technical requirements components may contain dangerous substances. For information on the type in question please also contact one of our Sales Offices.